

LargeRotoSonic-EC

LargeRotoSonic multi-purpose drilling rig

Ask for your
tailored
OPEX ROI
calculation !



LRS-EC: LargeRotoSonic multi-purpose drilling rig

The LRS-EC is the latest development of Eijkelkamp SonicSampDrill when it comes to a multi-purpose LargeRotoSonic drill. Specifically designed for the foundation drilling industry. Drilling angles from vertical till horizontal are possible in almost all inclinations.

The CAT excavator has the latest generation emission engine and onboard digital computer. The hydraulics are redesigned and all drilling functions are powered of the engine. The unique mast system allows the trolley board and break out system to run along the rack and pinion from top to bottom simultaneously. This makes it a versatile drill rig but even more important a very safe and ergonomic drill rig! Especially in the special foundations drilling industry hands off drill steel or anchors hasn't been achieved. With this drill it is a fact!



LargeRotoSonic Drill head LRS-50K	Metric	Imperial
Sonic frequency	0 - 150 Hz	0 - 150 Hz
Sonic vibration oscillator output force	227 kN	50k lbf
Rotation speed	92 rpm	92 rpm
Rotation torque clockwise	8.900 Nm @ 275 bar	6.565 ft-lbf @ 3.990 psi
Rotation torque counter clockwise	10.000 Nm @ 310 bar	7,375 ft-lbf @ 4.495 psi
Head tilt max.	90 degr.	90 degr.
Type of damper	Air cushion	Air cushion
Max. hydraulic pressure on sonic	310 bar	5.000 psi
Mass of drill head	1.250 kg	2.800 lbs
Pull up force with sonic	10.000 daN	22,480 lbf
Pull down force with sonic	10.000 daN	22,480 lbf
Pull up force static	10.000 daN	22,480 lbf
Pull down force static	10.000 daN	22,480 lbf
Drilling angle	80° and 10° of perpendicularly	80° and 10° of perpendicularly

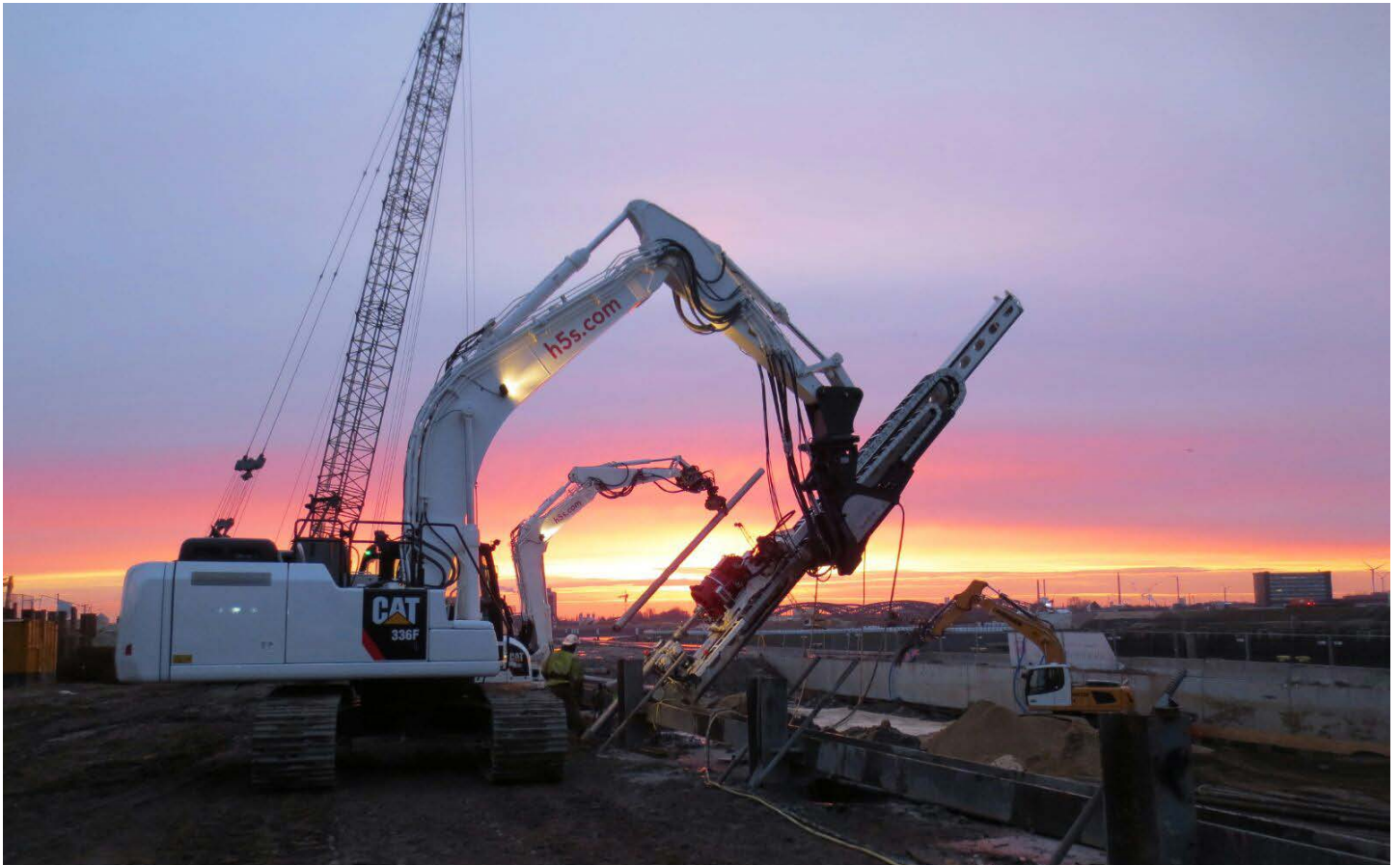
Rig	Metric	Imperial
Engine: CAT C9 ACERT EPA tier 4 interim	236 kW	321 HP
High ambient cooling package with variable fan speed		
Isochronous speed control; high power, standard power or economy power		
Frame; ROPS CAB		
Fuel tank	620 liter	163 gallon
Undercarriage; Heavy duty version. 360 degrees slewing ring	Tracks 4.9 km/h	Tracks 3 mph
Counterweight; additional counterweight with integrated hydraulic tank of	6.500 kg	14,300 lbs
Total weight of CAT (without extension)	52.500 kg	115,500 lbs

Modifications Eijkelkamp SonicSampDrill

- Larger lifting hydraulic cylinders main boom
- Modified hydraulic pump configuration
- Compressor and air cooling unit added to engine
- Increased hydraulic tank
- Increased cooling package
- Added additional filtering (10 micron)
- Added auto shut off lube failure
- Added auto shut off overheating hydraulic oil

Options available

- Camera on drill head for connection long tools / anchors
- Manipulator along the mast.





Mast	Metric	Imperial
Standard mast length	10 m	32.8"
Work stroke	7 m	22.9"
Extendable with	6 m	19.6"
Extendable work stroke	12 m	39.3"
Special yoke alignment tool/allevation compensator between boom and mast		
Digital angle meter in cabin		
Double break out clamp with 50-280 mm / 2"-11" passage		

Design of the mast allows transport position without disconnecting any part of the mast and boom.



For more information on demos, pilot projects or personal advice, contact our sales department !



Uitmaat 8
6987 ER Giesbeek
The Netherlands

T +31 313 880 201
E info@sonicsampdrill.com
I sonicsampdrill.com